

MONTHLY MEMBERSHIP PROGRESS REPORT

District 4 C5

Results as of: 4/30/2026

GMT:

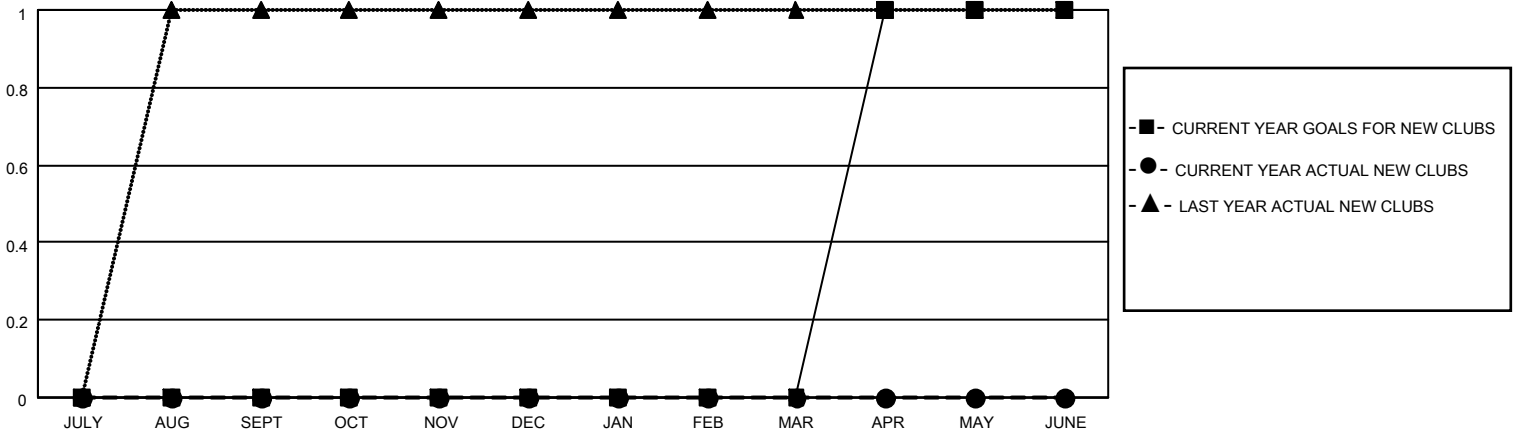
LOCATION CALIFORNIA

GMT CA

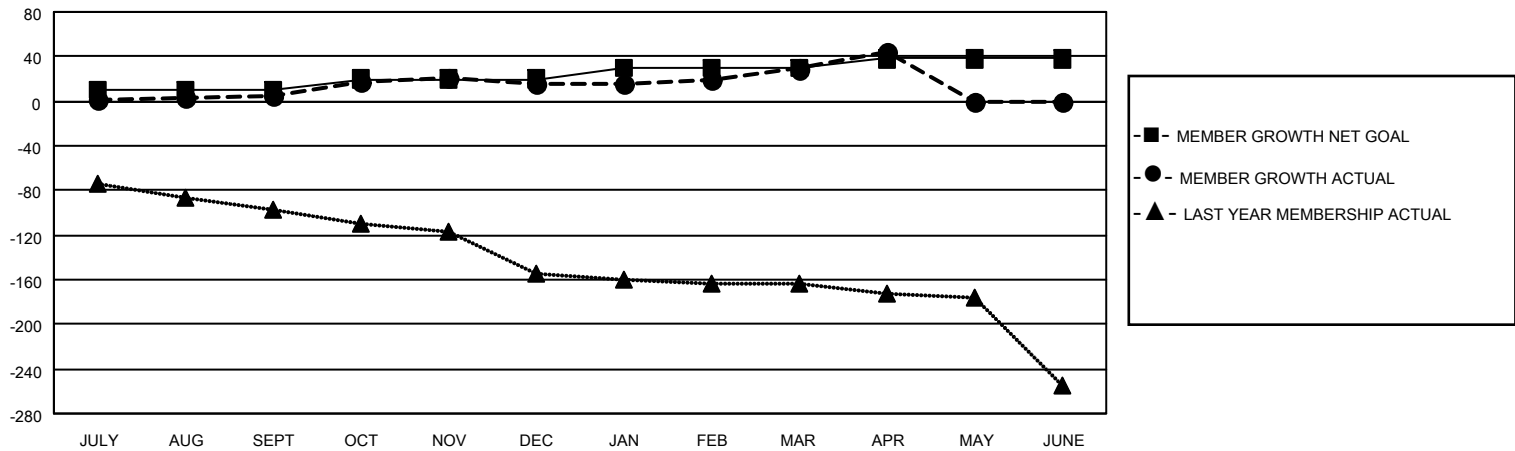
Clubs			
RESULTS FOR 2025-2026			
QUARTER	NEW CLUB GOAL	NEW CLUBS	DROPPED CLUBS
JULY/AUG/SEPT	0	0	0
OCT/NOV/DEC	0	0	0
JAN/FEB/MAR	0	0	0
APR/MAY/JUNE	1	0	0

Members			
RESULTS FOR 2025-2026			
QUARTER	MEMBER GROWTH NET GOAL	MEMBER GROWTH ACTUAL	DROPPED MEMBERS ACTUAL (including transfers)
JULY/AUG/SEPT	10	33	23
OCT/NOV/DEC	10	29	17
JAN/FEB/MAR	10	40	23
APR/MAY/JUNE	8	26	7

GOALS AND ACTUAL NEW CLUBS CUMULATIVE



GOALS AND ACTUAL MEMBERS CUMULATIVE



DROPPED CLUBS: 0	31 CLUBS OF 48 ADDED 1 OR MORE NEW MEMBERS	<u>GENDER DISTRIBUTION</u>	
		MALE	608 (50.46%)
		FEMALE	596 (49.46%)
<u>DROPPED MEMBERS</u>		TOTAL FAMILY UNIT MEMBERS 336	
DECEASED	23	FAMILY MEMBERS PAYING HALF DUES 174	
CLUB CANCELLED	0		
OTHER	47		
TOTAL	70		

[CLICK HERE FOR CUMULATIVE MEMBERSHIP DATA](#)